

Make your Own Matchbox

by Su Mwamba

Ideal storage for brads, pins, needles, and everything else small & spill-able in your workroom! (But beware potential theft by Borrowers, once you install this form of storage!)

Instructions & diagrams all © 2009, TangleCrafts

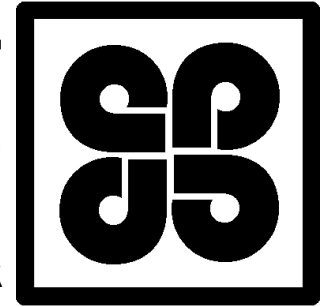
This PDF freebie is copyright to TangleCrafts, so please don't copy, sell, or otherwise distribute/profit from these instructions. Feel free to link back directly to this page/website, though - and of course, you have every right to sell the matchboxes you make!

This project is adapted from 'Make Your Own...Borrowers Zine within a Zine Within a Matchbox' by Su Mwamba, published by The Tangled Press.

TangleCrafts

simple crafts
in a complex world

www.tanglecrafts.co.uk

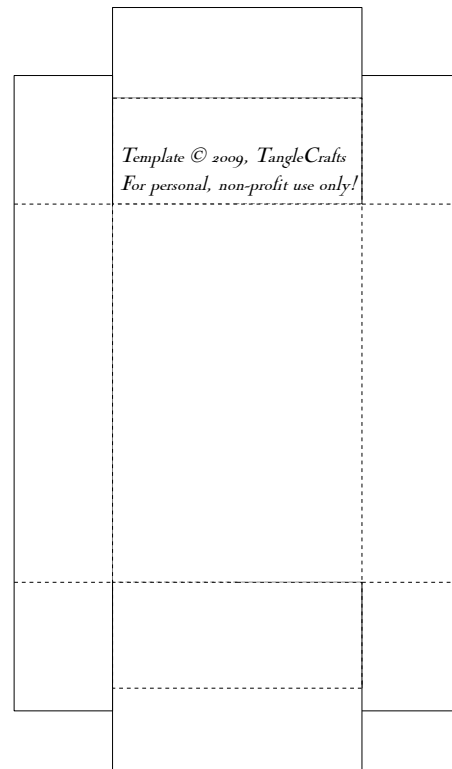


Make your own...

Matchbox Drawer

- Scan or photocopy template onto a medium-weight cardstock.
- Cut out along solid lines.
- Fold along dotted lines.
- With side & end panels folded upwards, use a strong paper glue to glue side tabs to end panels (at both ends).
- Fold end flaps down to cover tabs & glue into place.
- Once glue is dry, add a brad to one end of the drawer, for ease of opening!

N.B. This matchbox is just the right size to fit the miniature Borrowers zine I designed it for; however, you can increase or decrease the scale to make your own matchboxes of any size.



Template © 2009, TangleCrafts
For personal, non-profit use only!



Make your own...

Matchbox Sleeve

- Scan or photocopy template onto a medium-weight cardstock.
- Cut out along solid lines.
- Fold along dotted lines.
- Glue the matchbox sleeve together. The top flap is marginally shorter than the bottom flap, so make sure it is glued to the inside of the bottom flap.
- Wait for glue to dry.
- Add further embellishments, if desired.
- Insert Matchbox Drawer (& contents!).